

Mobile Networks

Remote and Branch Office

Aruba's solution for remote and branch offices allows administrators to deploy a single device to handle all networking needs, including wired LAN switching, wireless LAN, wireless intrusion detection, power over Ethernet, VPN, and firewall. Aruba's remote office and branch office platforms can be configured and managed from a central location so that consistent access and policy configuration is pushed out to all remote offices simultaneously. The solution greatly reduces cost of equipment for remote offices, and also simplifies management, further reducing operational costs.

Centralized Configuration and Management

Helps administrators manage the equipment at multiple sites. Configuration is done through a centralized management system and automatically pushed out to all remote mobility controllers. Each site has local configuration, such as IP addresses, ports, and VLANs, as well as global configuration such as user roles and policies. The centralized management model, in addition to reducing cost and complexity, ensures that employees can move from location to location with the same network access and same privileges, without the need for any client device reconfiguration.

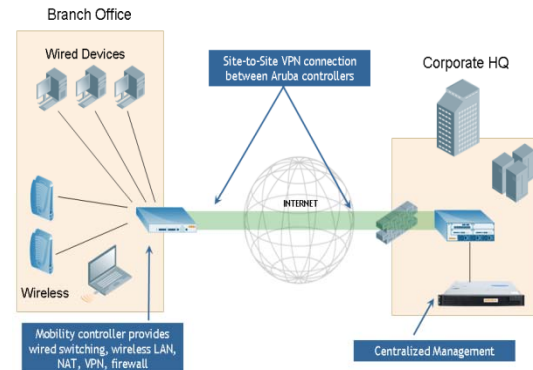
Centralized Wireless LAN Control

Provides high security and scalability by placing security, management, mobility, and RF calibration in a centralized mobility controller instead of distributed access points. This allows APs to be placed wherever it is convenient, without regard to RF planning or physical security. Secure mounting options can be used to lock down an AP, but even in the event that an AP is stolen, it contains no configuration or security information and is useless without the centralized controller.

Ethernet Switching

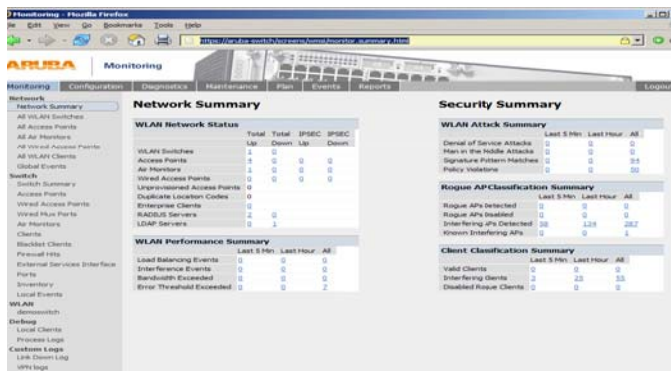
Permits the Aruba 800 or Aruba 2400 to be used as a standard 10/100 Ethernet switch. Multiple VLANs may be configured, with ports configured as either untagged access ports or tagged trunk ports. Standard 802.1d spanning tree is supported with adjustable timers. The use of an Aruba mobility controller as a wired Ethernet switch also allows identity-based security policies to be applied to wired devices, just as they normally are to wireless clients.

Solution Overview



Benefits:

- Low-cost platform for remote office networking needs
- Combines wired network, wireless network, firewall, and VPN into a single platform
- Centralized configuration and management lets administrators from headquarters site manage branch offices easily
- Platform provides Power over Ethernet to wireless APs, IP cameras, voice over IP handsets, and other powered devices, eliminating need for PoE injectors



Solution Overview

Required Components:

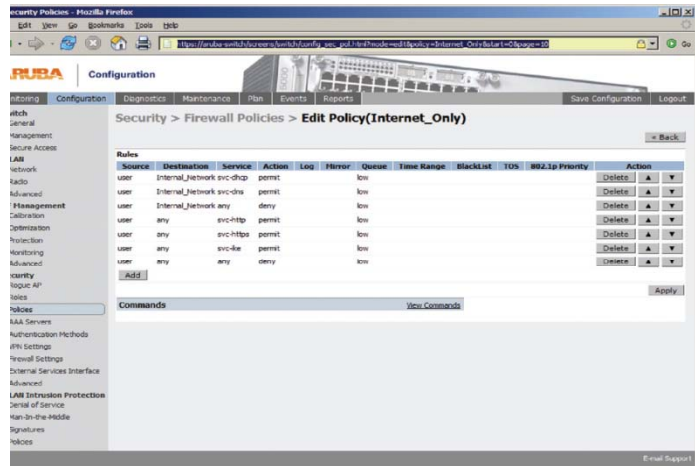
- Mobility Controller – Any Aruba Mobility Controller, Aruba 6000, Aruba 2400, Aruba 800
- System Software – Policy Enforcement Firewall Module
VPN Server Module
- Controlled Access Points – Aruba-Compatible Wireless Access Point, Aruba 41, Aruba 60, Aruba 61, Aruba 65, Aruba 70

IP Routing

Permits an Aruba mobility controller to act as a router between multiple VLANs or subnets at a remote or branch office. This eliminates the need to install an external router or routing switch when multiple subnets are needed, saving expense and complexity.

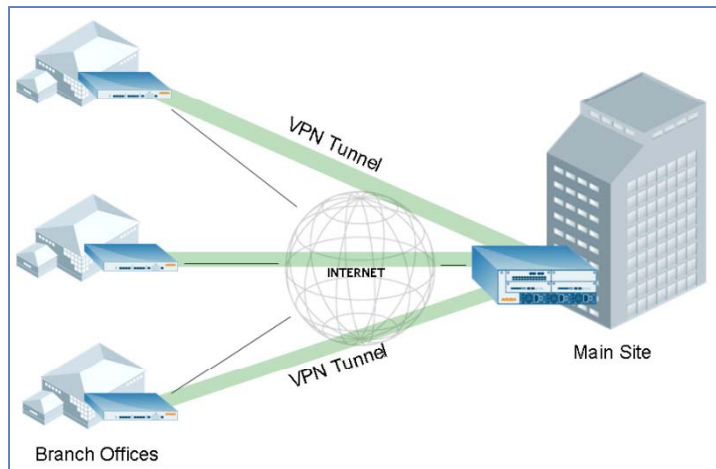
Policy Enforcement Firewall

Permits separation between employee, guest, and other types of traffic through Aruba's identity-based security. Guest users are assigned a guest role, while employees are assigned an internal role, and separate stateful firewall policies are applied to each. Granular policies permit other types of users, such as contractors, to also receive traffic separation and policy enforcement. Aruba's ICSA-certified policy enforcement firewall permits fine-grained control over what each user role is allowed to do on the network, preventing guests from accessing internal resources while preventing employees from having direct access to the Internet without passing through internal security infrastructure.



Site to Site VPN

Allows an Aruba mobility controller with an Internet connection to form a secure IPSEC tunnel to another Aruba mobility controller or to a dedicated VPN concentrator. Site to site VPN permits seamless extension of a corporate network out to remote and branch sites. Corporate traffic may selectively be sent through the VPN tunnel, while other traffic is sent directly to the Internet.



LTI DataComm
23020 Eaglewood Ct. #100
Sterling, VA 20166
www.ltidata.com
800-677-5050